



HARROP CREEK

Sample Date: August 12, 2022

General Location: Tributary into the West Arm of Kootenay Lake in the Harrop area of the south shore

Sampling location: Off of Lewis Road (latitude = 49.595384, longitude = -117.060319)

Stream Order: 5

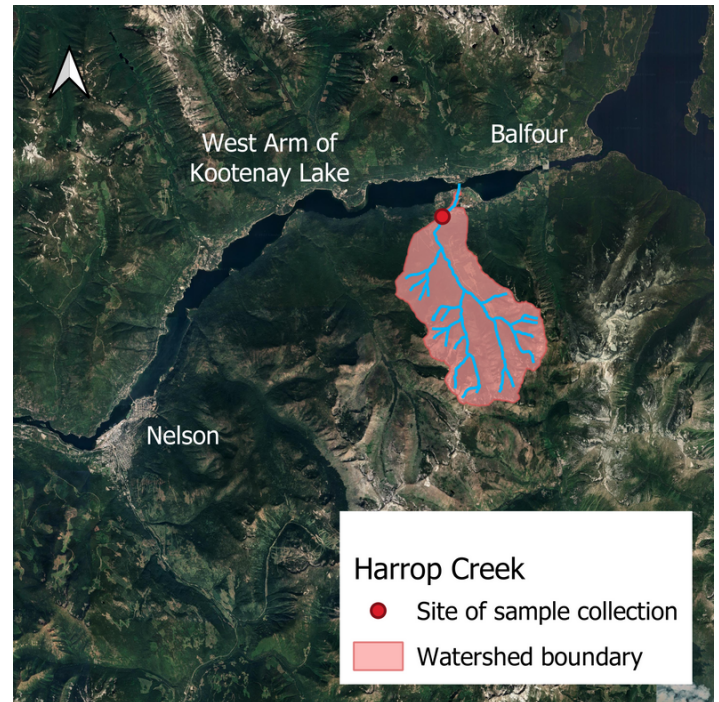
Introduction and Methods

We used a nationally standardized protocol for measuring freshwater ecosystem health called the Canadian Aquatic Biomonitoring Network (CABIN) protocol (find the full protocol [here](#)).

It focuses on benthic macroinvertebrates, which are aquatic animals without backbones that live on the bottom of waterbodies and are visible to the naked eye. Counts of benthic macroinvertebrates are indicators of water quality and overall stream health in part because these organisms are sensitive to disturbance (more about the science of aquatic biomonitoring [here](#)).

We assessed stream health by summarizing the macroinvertebrate communities of sampled streams. We calculated the following standard measures of stream health and compared them to the values we should observe in healthy streams in the Columbia Basin (based on the [Columbia Basin Reference Model](#))

1. **RIVPACS O:E Ratio** – River Invertebrate Prediction and Classification System ratio of observed taxa to expected taxa
2. **Metrics** – Various richness measures, numbers of individual taxa, compositional measures, and functional measures
3. **Bray-Curtis Dissimilarity** – Community structure similarity between test stream and healthy Columbia Basin streams



Results

Summary of Findings

Healthy, relative to the median reference (healthy) stream in the Columbia Basin. *Median definition: Denoting the middle value of a series arranged in order of magnitude.*

Detailed Findings

1. RIVPACS

Value = **1.02** indicating that the site was in excellent condition. Generally, sites with O:E ratios close to 1 are in good condition, sites with O:E ratios above 1 indicate enriched communities, and sites with low O:E ratios are in poor condition.

2. Metrics

Almost all values point to a stream that is as healthy or healthier than the median reference (healthy) stream in the Columbia Basin.

The three exceptions in Harrop Creek, compared to the average reference stream, were:

% of 2 dominant taxa was slightly higher

% of 5 dominant taxa was slightly higher

Simpson's Evenness was slightly lower

3. Bray-Curtis Dissimilarity

Value = **0.58** indicating an intermediate level of dissimilarity between Harrop Creek and the median reference (healthy) stream (values close to 0 indicate identical communities; values close to 1 indicate completely different communities)

Given that the RIVPACS and Metrics findings above indicate a healthy stream, this intermediate dissimilarity value suggests that the stream community is different in a "good" way (i.e., it has even more diversity and intolerant species than the average healthy stream in the Columbia Basin).

Discussion

The information gathered serves as a baseline to compare future stream health assessments to, to assess the impact of climate change and other future impacts to the watershed.

The three metrics that did not indicate a healthy stream could be due to the impacts of logging in the area as well as the impacts of nearby roads, address and water license points. Further studies need to be conducted in order to determine the specific causes of impairment. Overall, this is a healthy stream, relative to the median reference (healthy) stream in the Columbia Basin.

Data and results are available on our [website](#).

