



SANDY CREEK



Sample Date: September 12, 2022

General Location: Tributary into Kootenay River in the Taghum area of the south shore

Sampling location: Below Granite Road near Taghum Beach (latitude = 49.487657, longitude = -117.382002)

Stream Order: 3

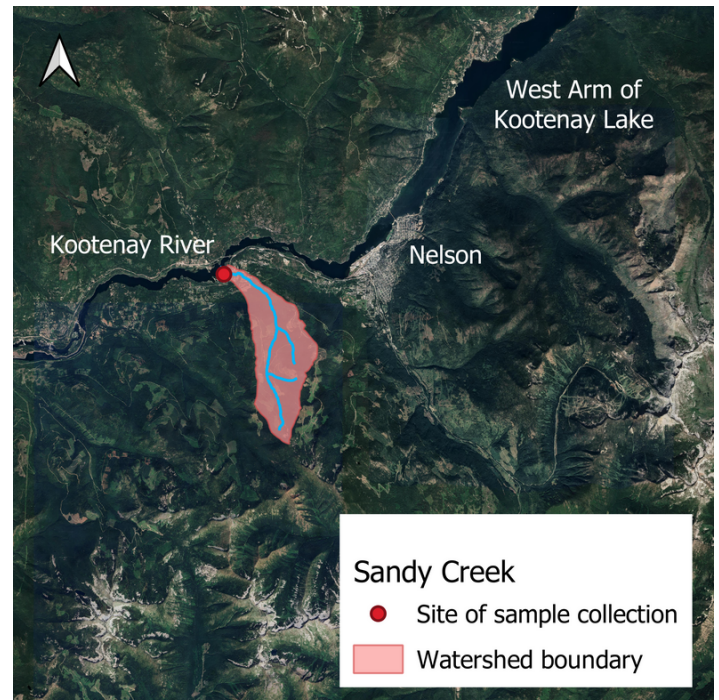
Introduction and Methods

We used a nationally standardized protocol for measuring freshwater ecosystem health called the Canadian Aquatic Biomonitoring Network (CABIN) protocol (find the full protocol [here](#)).

It focuses on benthic macroinvertebrates, which are aquatic animals without backbones that live on the bottom of waterbodies and are visible to the naked eye. Counts of benthic macroinvertebrates are indicators of water quality and overall stream health in part because these organisms are sensitive to disturbance (more about the science of aquatic biomonitoring [here](#)).

We assessed stream health by summarizing the macroinvertebrate communities of sampled streams. We calculated the following standard measures of stream health and compared them to the values we should observe in healthy streams in the Columbia Basin (based on the [Columbia Basin Reference Model](#))

1. **RIVPACS O:E Ratio** – River Invertebrate Prediction and Classification System ratio of observed taxa to expected taxa
2. **Metrics** – Various richness measures, numbers of individual taxa, compositional measures, and functional measures
3. **Bray-Curtis Dissimilarity** – Community structure similarity between test stream and healthy Columbia Basin streams



Results

Summary of Findings

Healthy, relative to the median reference (healthy) stream in the Columbia Basin. *Median definition: Denoting the middle value of a series arranged in order of magnitude.*

Detailed Findings

1. RIVPACS

Value = **0.93** indicating that the site was in good condition. Generally, sites with O:E ratios close to 1 are in good condition, sites with O:E ratios above 1 indicate enriched communities, and sites with low O:E ratios are in poor condition.

2. Metrics

- Almost all values point to a stream that is as healthy or healthier than the median reference (healthy) stream in the Columbia Basin.

The two exceptions were:

- % *Ephemeroptera that are Baetidae* was slightly higher in Sandy Creek than in the median reference (healthy) stream
- *Simpson's Evenness* was slightly lower in Sandy Creek than in the median reference (healthy) stream

3. Bray-Curtis Dissimilarity

- Value = **0.62** indicating an intermediate level of similarity between Sandy Creek and the median reference (healthy) stream (values close to 0 indicate identical communities; values close to 1 indicate completely different communities)
- Given that the RIVPACS and Metrics findings above indicate a healthy stream, this intermediate dissimilarity value suggests that the stream community is different in a "good" way (i.e., it has even more diversity and intolerant species than the median reference (healthy) stream in the Columbia Basin).

Discussion

The information gathered serves as a baseline to compare future stream health assessments to, to assess the impact of climate change and other future impacts to the watershed.

The two metrics that did not indicate a healthy stream could be due to the impacts of the very large amount of mining in the area, as well as some logging and address and water license points and nearby roads. Further studies need to be conducted in order to determine the specific causes of impairment. Overall, this stream is healthy, relative to the median reference (healthy) stream in the Columbia Basin.

Data and results are available on our [website](#).

Thank you to our funders:

